

2/21

The symbol of Lent is a cross. Do you see crosses in your church? Do they look the same or do they look different?

Draw them below!



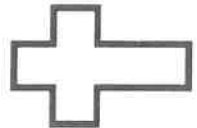
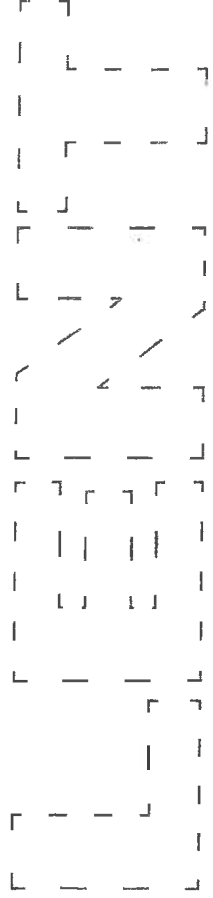
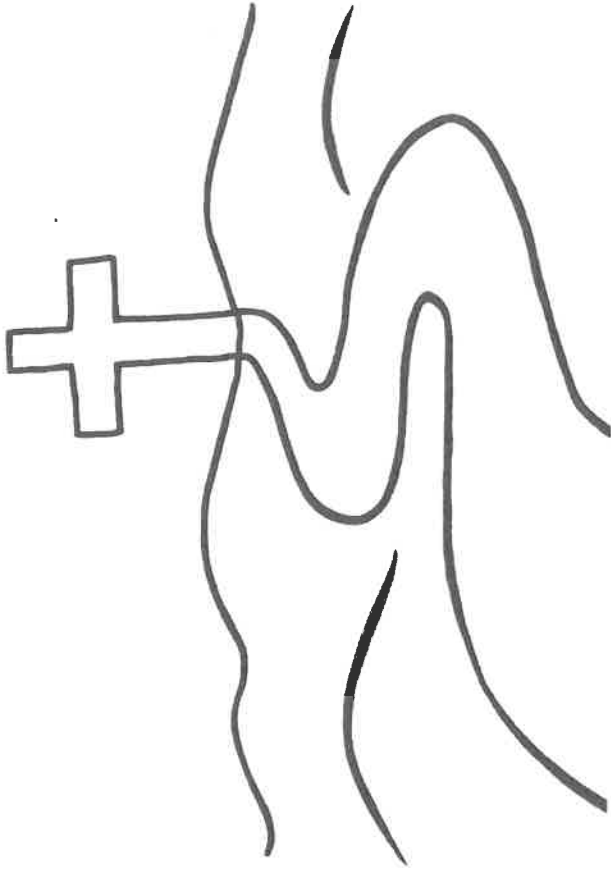
PRE-READER

Lent 1



- Today is the 1st Sunday in **Lent**.
- The color for Lent is **purple**.
- Purple represents **quiet**.
- Jesus was **lonely** in the quiet desert.

Trace the letters below to reveal what season we're in.



A Latin cross is a Christian symbol. It represents Jesus.



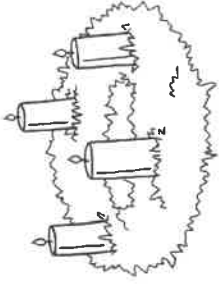
In a Greek cross, all four arms are the same length.



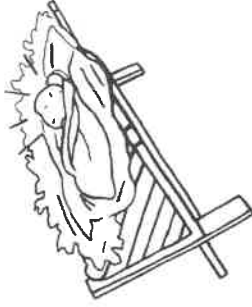
A crucifix shows Jesus' body on the cross. It helps us remember that Jesus died for us.

Can you match the symbol to its church season?

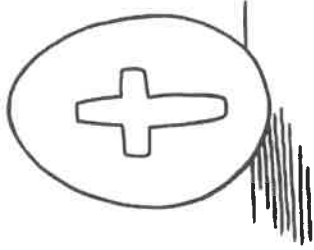
LENT



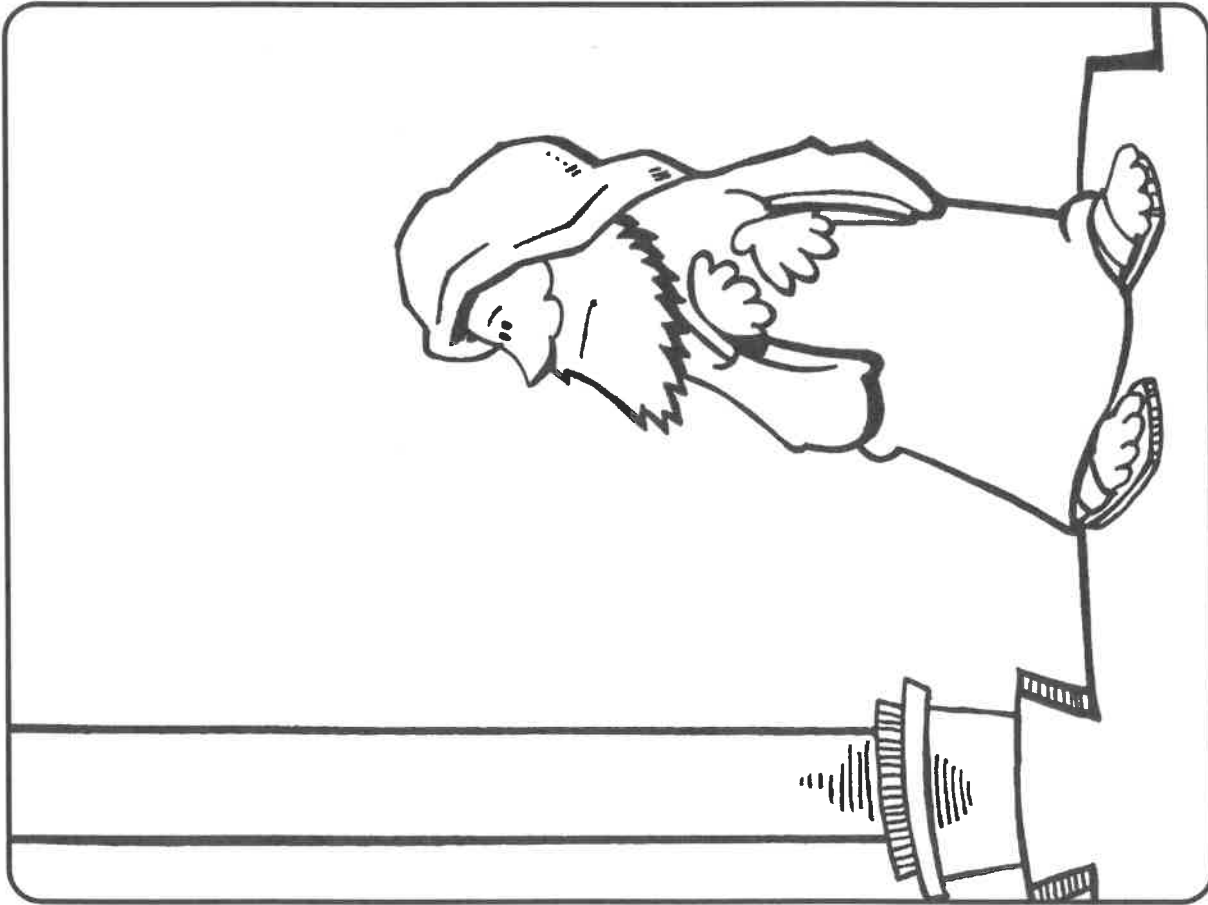
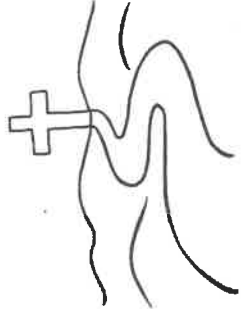
EASTER



ADVENT



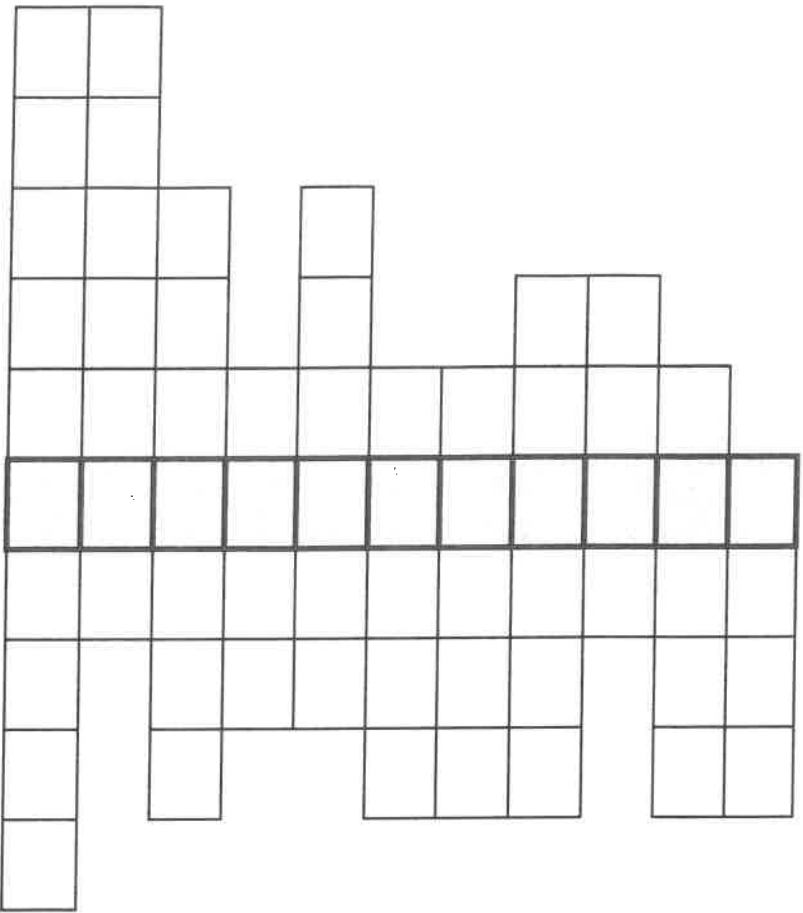
CHRISTMAS



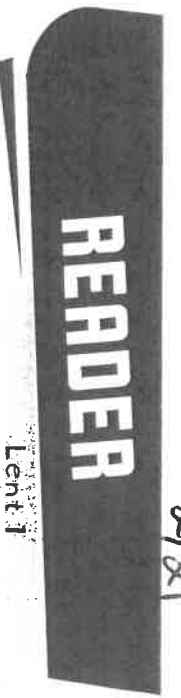
Jesus was happy that God was with him, especially when he was tempted to do wrong.

Splash Locale

During Lent we remember our baptisms. Use the clues to fill in the missing words. Read the circled letters to find out where John baptized Jesus. Then use another piece of paper to try to make your own puzzle about the place where people are baptized in your church – the font!



- Row 1 Man who baptized Jesus (Mark 1:9)
- Row 2 John's favorite sweet (Mark 1:6)
- Row 3 Prepare the way of the _____ (Mark 1:3)
- Row 4 People came from the _____ countryside (Mark 1:5)
- Row 5 I have baptized you with _____ (Mark 1:8)
- Row 6 I am not fit to _____ the thong of his sandals. (Mark 1:7)
- Row 7 The _____ descended on him like a dove. (Mark 1:10)
- Row 8 John proclaimed a baptism for the forgiveness of _____ (Mark 1:4)
- Row 9 He saw the _____ torn apart (Mark 1:10)
- Row 10 Jesus was _____ by Satan (Mark 1:13)
- Row 11 Where the spirit drove Jesus (Mark 1:12)



2/21

- Today is the 1st Sunday in Lent.
- The season of Lent lasts **40 days**.
- During Lent, we remember Jesus' time in the desert.
- After he was baptized, Jesus stayed in the desert for **40 days**.

Do the math!

Color in every square that equals 40. The colored squares will show a symbol of Lent.

2×30	4×4	$27 + 13$	23×4	$52 \div 4$
$64 \div 8$	5×3	$56 - 16$	$45 \div 5$	$61 - 35$
$80 \div 2$	$2 \times 4 \times 5$	$77 - 37$	$68 - 28$	$64 - 24$
9×7	$72 \div 3$	8×5	$67 - 20$	9×9
4×2	$71 - 13$	2×20	$5 \times 3 \times 2$	5×6
7×7	$81 \div 9$	$16 + 24$	$90 - 1$	$24 - 17$
$49 \div 7$	$2 \times 4 \times 2$	$46 - 6$	$54 \div 9$	$17 + 24$



