

Our path to returning in person to our sanctuary and other spaces requires a plan and a roadmap. We also recognize, as with any journey, we must be flexible and willing to modify our decisions and route when circumstances change. Our plan will always remain flexible and responsive to public health information and will be guided by our shared values.

### The Values Guiding the ERUCC Plan for Reopening

**Love for Neighbor** – We proceed cautiously and with social distancing measures to protect the safety and health of our community.

**Access and Equity** – We create opportunities to participate how you feel comfortable, online and/or in-person, and will work to ensure experiences in both spaces are in harmony.

**Social Justice** – We know COVID-19 disproportionately impacts people of color and other marginalized populations. We believe our plan helps protect our vulnerable neighbors.

**Service to Others** – We acknowledge that helping to keep our neighbors healthy is a part of our service to our community and how we can be a face of God's love.

**Radical Hospitality** – We continue to welcome you no matter who you are or where you are on life's journey and we will welcome you literally *wherever* you are!

**Connection and Relationship** – We value being in community together. We commit to continuing and expanding opportunities to worship, learn, and fellowship together.

**Transparency** – We, as a team of ERUCC members, consulted scientifically-based documents, trusted public health officials, and ecumenical leaders to develop our plan for reopening and will continue to do so.

We will regularly share information and updates to our members and friends and we place our trust in you to make the best decisions for you and your family as we move forward together.

### ERUCC REOPENING WORK GROUP

Chuck Baldree, Cliff Barr, Peter Brehm, Linda Coyle, Tom Frazier,  
Barbara Kershner Daniel, Marc Kline, Sue Pinner, Kim Sexton, Jane Talarico, and Tyler L. York

## STEPS FOR REOPENING ERUCC

STEP 1

STAY AT  
HOME

STEP 2

CAUTIOUS

STEP 3

VIGILANT

STEP 4

NEW  
NORMAL

## STEP 1: STAY AT HOME

### SOCIAL DISTANCING MEASURES OBSERVED

#### WORSHIP

- Streamed at 10:30am only

#### EDUCATION

- Virtual classes and activities for children, youth, and adults

#### FELLOWSHIP

- Virtual + limited outside activities with careful social distancing

#### COMMITTEE AND TEAM BUSINESS

- Virtual only

## STEP 2: CAUTIOUS

### SOCIAL DISTANCING MEASURES OBSERVED

#### WORSHIP

- Streamed at 10:30am Sundays
- Limited in-person attendance at 8:30am and 10:30am Sundays (*RSVP encouraged*)
- Limited in-person attendance outdoors at 6:00pm Wednesdays (*summer only*)

#### EDUCATION

- Virtual classes and activities for children, youth, and adults
- Select classes for adults held virtually and in-person with careful social distancing

#### FELLOWSHIP

- Virtual + limited outside activities with careful social distancing

#### COMMITTEE AND TEAM BUSINESS

- Virtual only

## STEP 3: VIGILANT

### SOME SOCIAL DISTANCING RELAXED

#### WORSHIP

- Streamed at 10:30am Sundays
- Increased in-person attendance at 8:30am and 10:30am Sundays (*RSVP encouraged*)
- Limited in-person attendance outdoors at 6:00pm Wednesdays (*summer only*)

#### EDUCATION

- Virtual and/or in-person classes and activities for children, youth, and adults

#### FELLOWSHIP

- Virtual and increased attendance at outside activities with some social distancing
- In-person with careful social distancing

#### COMMITTEE AND TEAM BUSINESS

- Virtual and in-person with careful social distancing

## STEP 4: NEW NORMAL

### SOCIAL DISTANCING NO LONGER NEEDED

#### WORSHIP

- Streamed at 10:30am Sundays
- Full attendance possible at 8:30am and 10:30am Sundays

#### EDUCATION

- Virtual and/or in-person classes and activities for children, youth, and adults

#### FELLOWSHIP

- Virtual + in-person activities

#### COMMITTEE AND TEAM BUSINESS

- Virtual and/or in-person

We continue to envision how we will live out our lives of faith at ERUCC as we journey toward the *new normal* once we are beyond the risk of COVID-19.

All steps of the ERUCC COVID-19 Reopening Plan are flexible and remain open to change.  
For the most up-to-date information go to [erucc.org](http://erucc.org) or email [erucc@erucc.org](mailto:erucc@erucc.org).

### WHAT TO EXPECT IN STEP 2

## CAUTIOUS

#### WORSHIP

- Streamed at 10:30am Sundays
- Limited in-person attendance at 8:30am & 10:30am Sundays (*RSVP encouraged*)
- Limited in-person attendance outdoors at 6:00pm Wednesdays (*summer only*)

#### EDUCATION

- Virtual classes and activities for children, youth, and adults
- Select classes for adults held virtually and in-person with careful social distancing

#### FELLOWSHIP

- Virtual + limited outside activities with careful social distancing

#### COMMITTEE AND TEAM BUSINESS

- Virtual only



### WHAT TO EXPECT WHEN CONNECTING WITH ERUCC AT HOME

Wherever you are, we welcome you! In Step 2 of the ERUCC Reopening Plan, we will continue to offer and expand opportunities for worship, education, and fellowship through virtual platforms.

Our 10:30am Sunday **worship** service will continue to be available through our livestream and on demand at [erucc.org](http://erucc.org). Worship materials, including service bulletins, will continue to be delivered to your home so that you may worship when, where, and how you choose.

We will share about ways to participate in both our ongoing and unique **education** and **fellowship** activities through email and social media.

## STEP 2 CAUTIOUS



## WHAT TO EXPECT WHEN CONNECTING IN ERUCC SPACES

We will again offer opportunities for **worship** in our sacred spaces as we enter Step 2 of the ERUCC Reopening Plan. In time, we will also host limited **education** and **fellowship** activities in our spaces as well. If you choose to connect in ERUCC spaces, please expect changes to the experience you had prior to COVID-19. As we cautiously proceed, for example, we will suspend in-person celebration of Communion and congregational singing. Additionally, materials in the pews, including hymnals and Bibles, have been removed to limit points of physical contact.

Out of an abundance of caution and love for neighbor, attendance at worship services will be limited and social distancing measures will be necessary. We encourage you to RSVP if you plan to attend our 10:30am Sunday worship service. More information will be shared via email on how to RSVP.

We look forward to extending our radical welcome to you. Thank you for your patience, understanding, and grace as we cautiously reopen our doors.



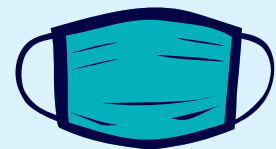
### stay home if sick

if you experience symptoms like cough or fever, we ask that you join us online



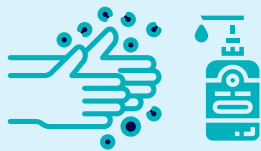
### social distancing

maintain a 6-foot physical distance at all times



### masking

wear a mask inside ERUCC buildings



### wash and sanitize

wash hands for at least 20 seconds and use hand sanitizer often



### bring what you need

please bring materials like the service bulletin with you to worship whenever possible



### use designated entrances

you will be warmly greeted and provided guidance for your visit



### designated seating

be prepared for a new view from the pews – an usher will direct you to the next available seat



### giving and generosity

make gifts of generosity by mail or online at [erucc.org](http://erucc.org)



### restrooms and water

restrooms and water are available, but we encourage you to use the restroom before leaving home